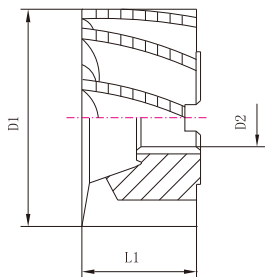


Metric Roughing Type HR

公制细牙波刃



Type & Specifications / 类型与规格



D1 js14	L1 k16	D2 H7	Flute No.	Order No. HSS	Order No. HSS-Co8	D1 js14	L1 k16	D2 H7	Flute No.	Order No. HSS	Order No. HSS-Co8
40	32	16	6	2410641000	2410651000	80	45	27	8	2410842000	2410852000
50	36	22	6	2410642000	2410652000	100	50	32	10	2411041000	2411051000
63	40	27	8	2410841000	2410851000	125	56	40	12	2411241000	2411241000

Imperial Roughing Type NR

英制粗牙波刃

HSS

HSS
Co8

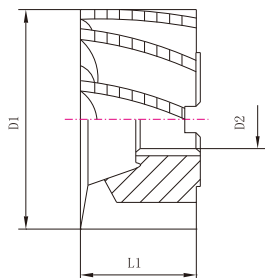
TYPE
NR

Z
6-10

30°

ANSI
B94.19

Type & Specifications/类型与规格



D1 js14	L1 k16	D2 H7	Flute No.	Order No. HSS	Order No. HSS-Co8	D1 js14	L1 k16	D2 H7	Flute No.	Order No. HSS	Order No. HSS-Co8
1-1/4	1	1/2	6	2410651000	2410661000	2-3/4	2	1	10	2411056000	2411066000
1-1/2	1-1/8	1/2	8	2410851000	2410861000	3	1-3/4	1-1/4	10	2411057000	2411067000
1-3/4	1-1/4	3/4	8	2410852000	2410862000	3	2	1-1/4	10	2411058000	2411068000
2	1-3/8	3/4	8	2410852000	2410862000	3-1/2	1-7/8	1-1/4	10	2411059000	2411069000
2	2	3/4	8	2410852000	2410862000	3-1/2	2	1-1/4	10	2411059800	2411069800
2-1/4	1-1/2	1	10	2411051000	2411061000	4	2-1/4	1-1/2	12	2411251000	2411261000
2-1/4	2	1	10	2411052000	2411062000	4-1/2	2-1/4	1-1/2	12	2411252000	2411262000
2-1/2	1-5/8	1	10	2411053000	2411063000	5	2-1/4	1-1/2	14	2411451000	2411461000
2-1/2	2	1	10	2411054000	2411064000	5-1/2	2-1/4	2	14	2411452000	2411462000
2-3/4	1-5/8	1	10	2411055000	2411065000	6	2-1/4	2	16	2411651000	2411661000