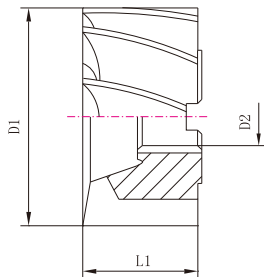


## Metric Standard

公制标准型



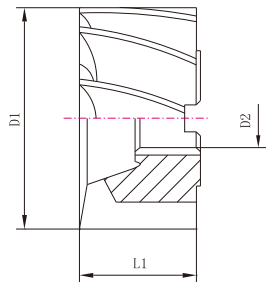
## Type & Specifications / 类型与规格



D1 js12	L1 k16	D2 H7	Flute No.	Order No. HSS	Order No. HSS-Co8	D1 js12	L1 k16	D2 H7	Flute No.	Order No. HSS	Order No. HSS-Co8
40	32	16	8	2310801000	2310811000	100	50	32	12	2311201000	2311211000
50	36	22	8	2310802000	2310812000	125	56	40	14	2311401000	2311411000
63	40	27	10	2311001000	2311011000	160	63	50	16	2311601000	2311611000
80	45	27	10	2311002000	2311012000						



## Type & Specifications / 类型与规格



D1 js12	L1 k16	D2 H7	Flute No.	Order No. HSS	Order No. HSS-Co8	D1 js12	L1 k16	D2 H7	Flute No.	Order No. HSS	Order No. HSS-Co8
1-1/4	1	1/2	6	2310641000	2310651000	2-3/4	2	1	10	2311046000	2311056000
1-1/2	1-1/8	1/2	8	2310841000	2310851000	3	1-3/4	1-1/4	10	2311047000	2311057000
1-3/4	1-1/4	3/4	8	2310842000	2310852000	3	2	1-1/4	10	2311048000	2311058000
2	1-3/8	3/4	8	2310843000	2310853000	3-1/2	1-7/8	1-1/4	10	2311049000	2311059000
2	2	3/4	8	2310844000	2310854000	3-1/2	2	1-1/4	10	2311049800	2311059800
2-1/4	1-1/2	1	10	2311041000	2311051000	4	2-1/4	1-1/2	12	2311241000	2311251000
2-1/4	2	1	10	2311042000	2311052000	4-1/2	2-1/4	1-1/2	12	2311242000	2311252000
2-1/2	1-5/8	1	10	2311043000	2311053000	5	2-1/4	1-1/2	14	2311441000	2311451000
2-1/2	2	1	10	2311044000	2311054000	5-1/2	2-1/4	2	14	2311442000	2311452000
2-3/4	1-5/8	1	10	2311045000	2311055000	6	2-1/4	2	16	2311641000	2311651000